

# BIPOLAR ANALOG INTEGRATED CIRCUIT

# $\mu$ PC2710T

### 5 V, MINIMOLD SILICON MMIC MEDIUM OUTPUT POWER AMPLIFIER

#### DESCRIPTION

The  $\mu$ PC2710T is a silicon monolithic integrated circuits designed as PA driver for 900 MHz band cellular telephone tuners. This IC is packaged in minimold package.

This IC is manufactured using NEC's 20 GHz fr NESAT™ III silicon bipolar process. This process uses silicon nitride passivation film and gold electrodes. These materials can protect chip surface from external pollution and prevent corrosion/migration. Thus, this IC has excellent performance, uniformity and reliability.

#### FEATURES

- Supply voltage :  $V_{CC} = 4.5$  to  $5.5$  V
- Wideband response :  $f_u = 1.0$  GHz TYP. @ 3 dB bandwidth
- Medium output power :  $P_{O(sat)} = +13.5$  dBm TYP. @  $f = 500$  MHz with external inductor
- Power gain :  $G_P = 33$  dB TYP. @  $f = 500$  MHz
- Port impedance : input/output  $50 \Omega$

#### APPLICATION

- PA driver for PDC900M

#### ORDERING INFORMATION

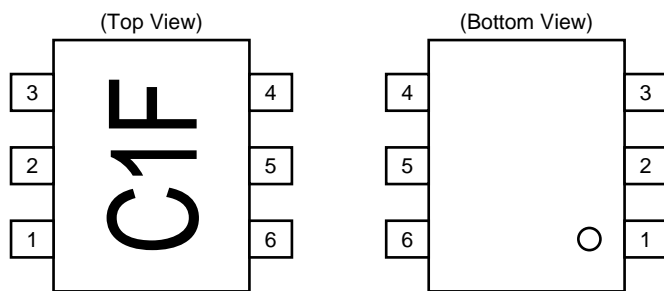
Part Number	Package	Marking	Supplying Form
$\mu$ PC2710T-E3	6-pin minimold	C1F	Embossed tape 8 mm wide. 1, 2, 3 pins face to perforation side of the tape. Qty 3 kp/reel

**Remark** To order evaluation samples, please contact your local NEC sales office. (Part number for sample order:  $\mu$ PC2710T)

**Caution** Electro-static sensitive devices

The information in this document is subject to change without notice.

**PIN CONNECTIONS**



Pin No.	Pin Name
1	INPUT
2	GND
3	GND
4	OUTPUT
5	GND
6	V <sub>cc</sub>

**PRODUCT LINE-UP OF μPC2710 (T<sub>A</sub> = +25°C, V<sub>cc</sub> = V<sub>out</sub> = 5.0 V, Z<sub>L</sub> = Z<sub>s</sub> = 50 Ω)**

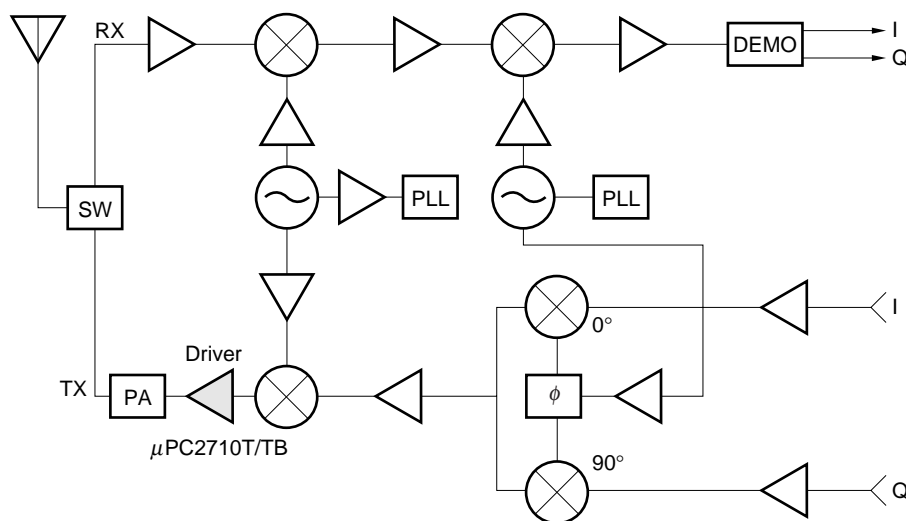
Part No.	f <sub>u</sub> (GHz)	P <sub>O(sat)</sub> (dBm)	G <sub>P</sub> (dB)	NF (dB)	I <sub>cc</sub> (mA)	Package	Marking
μPC2710T	1.0	+13.5	33	3.5	22	6-pin minimold	C1F
μPC2710TB						6-pin super minimold	

**Remark** Typical performance. Please refer to **ELECTRICAL CHARACTERISTICS** in detail.

**Notice** The package size distinguishes between minimold and super minimold.

**SYSTEM APPLICATION EXAMPLE**

**EXAMPLE OF 900 MHz BAND DIGITAL CELLULER TELEPHONE**



**PIN EXPLANATION**

Pin No.	Pin Name	Applied Voltage V	Pin Voltage V <sup>Note</sup>	Function and Applications	Internal Equivalent Circuit
1	INPUT	–	0.90	Signal input pin. A internal matching circuit, configured with resistors, enables 50 Ω connection over a wide band. A multi-feedback circuit is designed to cancel the deviations of h <sub>FE</sub> and resistance. This pin must be coupled to signal source with capacitor for DC cut.	
4	OUTPUT	Voltage as same as V <sub>CC</sub> through external inductor	–	Signal output pin. The inductor must be attached between V <sub>CC</sub> and output pins to supply current to the internal output transistors.	
6	V <sub>CC</sub>	4.5 to 5.5	–	Power supply pin, which biases the internal input transistor. This pin should be externally equipped with bypass capacitor to minimize its impedance.	
2 3 5	GND	0	–	Ground pin. This pin should be connected to system ground with minimum inductance. Ground pattern on the board should be formed as wide as possible. All the ground pins must be connected together with wide ground pattern to decrease impedance difference.	

**Note** Pin voltage is measured at V<sub>CC</sub> = 5.0 V

**ABSOLUTE MAXIMUM RATINGS**

Parameter	Symbol	Conditions	Ratings	Unit
Supply Voltage	V <sub>CC</sub>	T <sub>A</sub> = +25°C, Pin 4 and 6	5.8	V
Total Circuit Current	I <sub>CC</sub>	T <sub>A</sub> = +25°C	60	mA
Power Dissipation	P <sub>D</sub>	Mounted on double copper clad 50 × 50 × 1.6 mm epoxy glass PWB (T <sub>A</sub> = +85°C)	280	mW
Operating Ambient Temperature	T <sub>A</sub>		-40 to +85	°C
Storage Temperature	T <sub>stg</sub>		-55 to +150	°C
Input Power	P <sub>in</sub>	T <sub>A</sub> = +25°C	+10	dBm

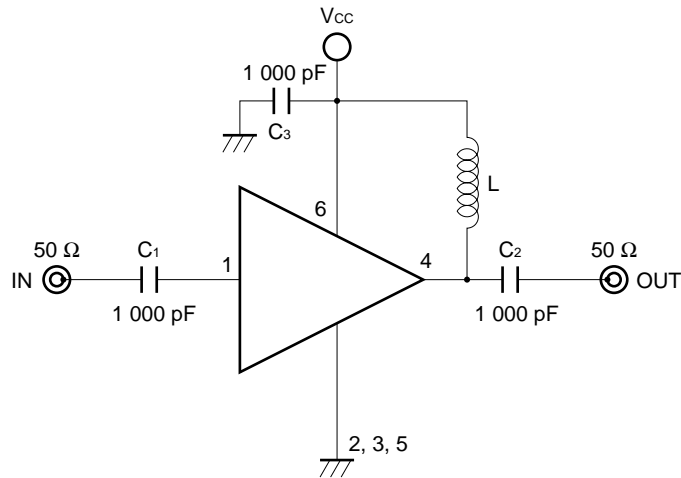
**RECOMMENDED OPERATING CONDITIONS**

Parameter	Symbol	MIN.	TYP.	MAX.	Unit	Notice
Supply Voltage	V <sub>CC</sub>	4.5	5.0	5.5	V	The same voltage should be applied to pin 4 and 6.
Operating Ambient Temperature	T <sub>A</sub>	-40	+25	+85	°C	

**ELECTRICAL CHARACTERISTICS (T<sub>A</sub> = +25°C, V<sub>CC</sub> = V<sub>out</sub> = 5.0 V, Z<sub>s</sub> = Z<sub>L</sub> = 50 Ω)**

Parameter	Symbol	Test Conditions	MIN.	TYP.	MAX.	Unit
Circuit Current	I <sub>CC</sub>	No Signal	16	22	29	mA
Power Gain	G <sub>P</sub>	f = 500 MHz	30	33	36.5	dB
Maximum Output Level	P <sub>O(sat)</sub>	f = 500 MHz, P <sub>in</sub> = -8 dBm	+11	+13.5	-	dBm
Noise Figure	NF	f = 500 MHz	-	3.5	5.0	dB
Upper Limit Operating Frequency	f <sub>u</sub>	3 dB down below flat gain at f = 0.1 GHz	0.7	1.0	-	GHz
Isolation	ISL	f = 500 MHz	34	39	-	dB
Input Return Loss	RL <sub>in</sub>	f = 500 MHz	3	6	-	dB
Output Return Loss	RL <sub>out</sub>	f = 500 MHz	9	12	-	dB
Gain Flatness	ΔG <sub>P</sub>	f = 0.1 to 0.6 GHz	-	±0.8	-	dB

**TEST CIRCUIT**



**COMPONENTS OF TEST CIRCUIT FOR MEASURING ELECTRICAL CHARACTERISTICS**

	Type	Value
C <sub>3</sub>	Capacitor	1 000 pF
L	Bias Tee	1 000 nH
C <sub>1</sub> to C <sub>2</sub>	Bias Tee	1 000 pF

**EXAMPLE OF ACTURAL APPLICATION COMPONENTS**

	Type	Value	Operating Frequency
C <sub>1</sub> to C <sub>3</sub>	Chip Capacitor	1 000 pF	100 MHz or higher
L	Chip Inductor	300 nH	10 MHz or higher
		100 nH	100 MHz or higher
		10 nH	1.0 GHz or higher

**INDUCTOR FOR THE OUTPUT PIN**

The internal output transistor of this IC consumes 20 mA, to output medium power. To supply current for output transistor, connect an inductor between the V<sub>cc</sub> pin (pin 6) and output pin (pin 4). Select large value inductance, as listed above.

The inductor has both DC and AC effects. In terms of DC, the inductor biases the output transistor with minimum voltage drop to output enable high level. In terms of AC, the inductor make output-port impedance higher to get enough gain. In this case, large inductance and Q is suitable.

**CAPACITORS FOR THE V<sub>cc</sub>, INPUT AND OUTPUT PINS**

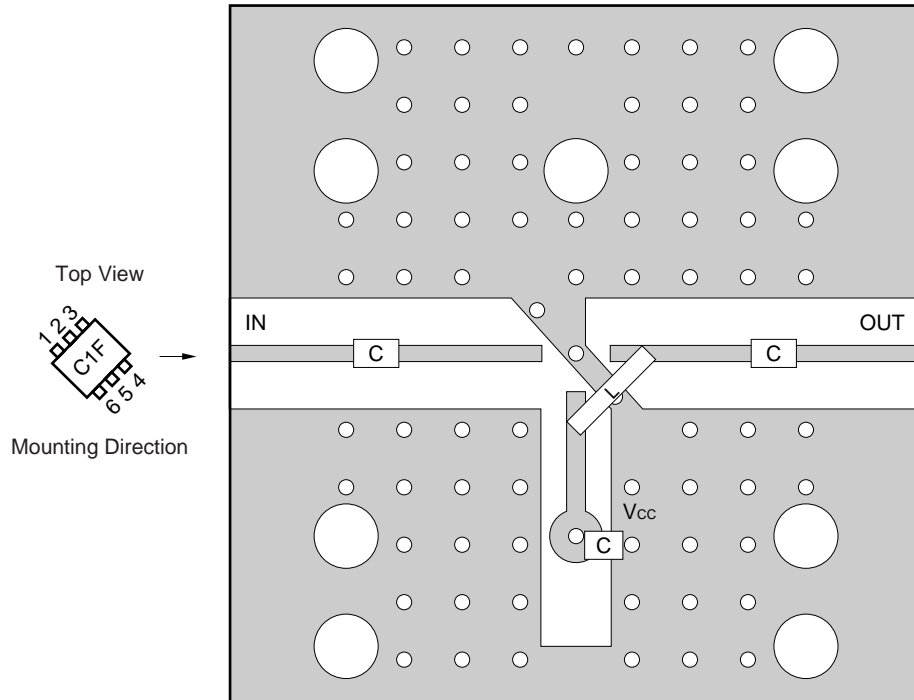
Capacitors of 1000 pF are recommendable as the bypass capacitor for the V<sub>cc</sub> pin and the coupling capacitors for the input and output pins.

The bypass capacitor connected to the V<sub>cc</sub> pin is used to minimize ground impedance of V<sub>cc</sub> pin. So, stable bias can be supplied against V<sub>cc</sub> fluctuation.

The coupling capacitors, connected to the input and output pins, are used to cut the DC and minimize RF serial impedance. Their capacitance are therefore selected as lower impedance against a 50 Ω load. The capacitors thus perform as high pass filters, suppressing low frequencies to DC.

To obtain a flat gain from 100 MHz upwards, 1000 pF capacitors are used in the test circuit. In the case of under 10 MHz operation, increase the value of coupling capacitor such as 10000 pF. Because the coupling capacitors are determined by equation,  $C = 1/(2 \pi Rf_c)$ .

ILLUSTRATION OF THE TEST CIRCUIT ASSEMBLED ON EVALUATION BOARD



COMPONENT LIST

	Value
C	1 000 pF
L	300 nH

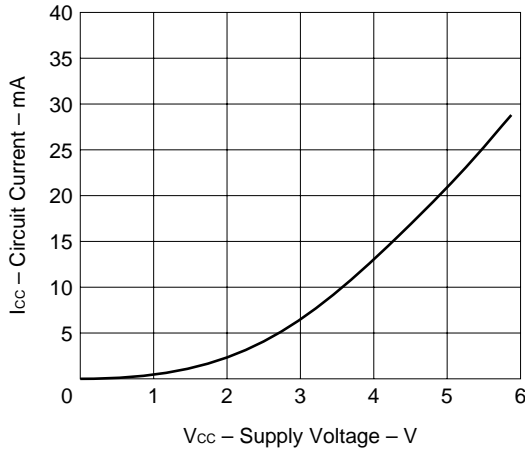
Notes

1. 30 × 30 × 0.4 mm double sided copper clad polyimide board.
2. Back side: GND pattern
3. Solder plated on pattern
4. ○ ○ : Through holes

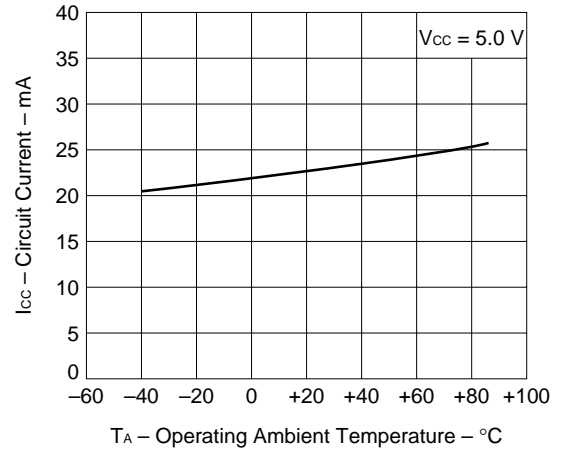
For more information on the use of this IC, refer to the following application note: USAGE AND APPLICATION OF SILICON MEDIUM-POWER HIGH-FREQUENCY AMPLIFIER MMIC (P12152E).

**TYPICAL CHARACTERISTICS (Unless otherwise specified,  $T_A = +25^\circ\text{C}$ )**

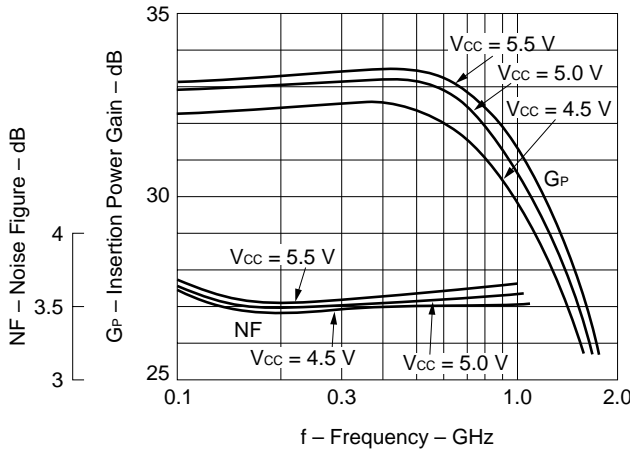
**CIRCUIT CURRENT vs. SUPPLY VOLTAGE**



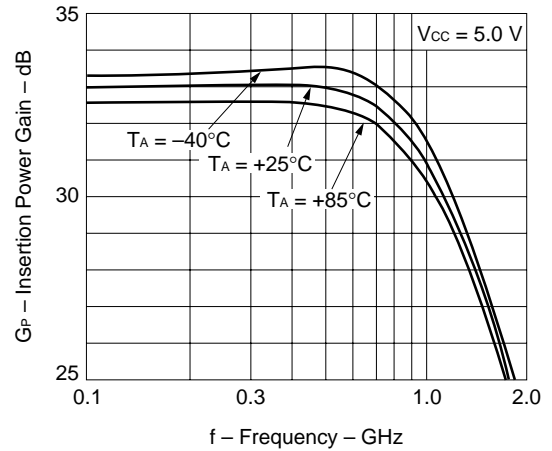
**CIRCUIT CURRENT vs. OPERATING AMBIENT TEMPERATURE**



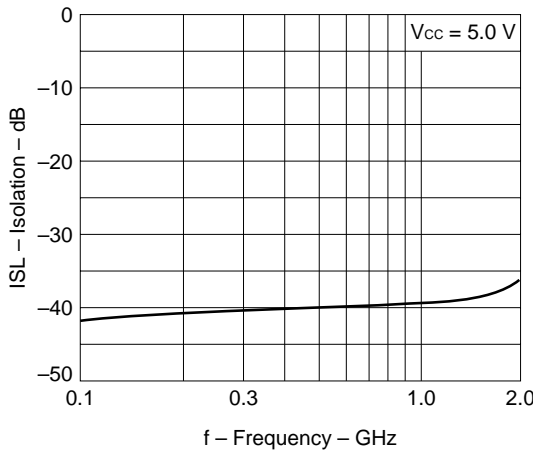
**NOISE FIGURE AND INSERTION POWER GAIN vs. FREQUENCY**



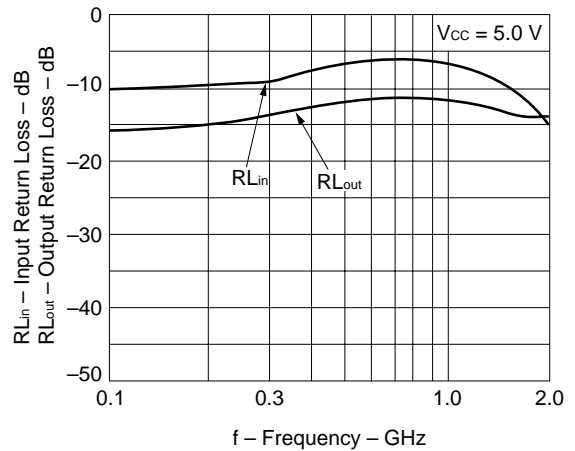
**INSERTION POWER GAIN vs. FREQUENCY**

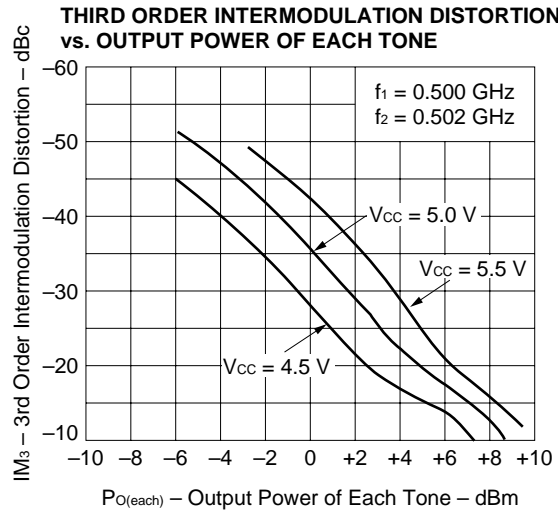
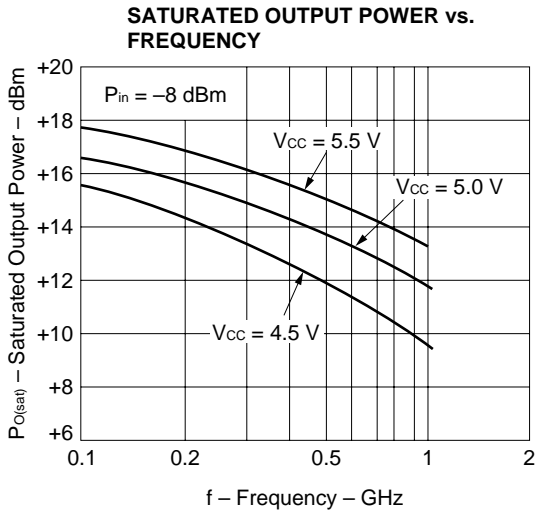
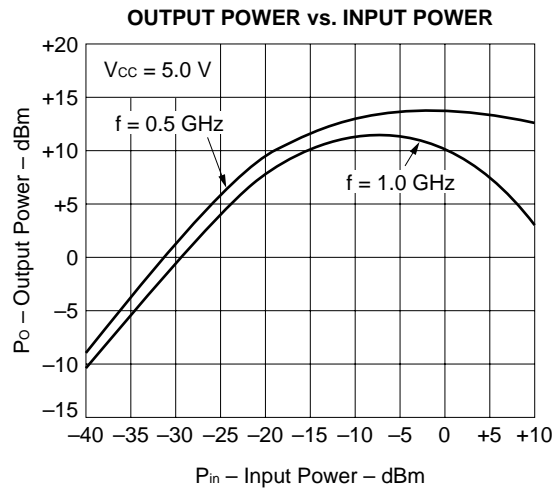
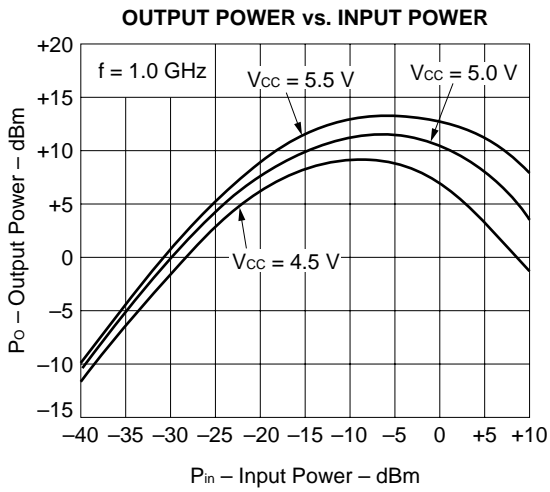
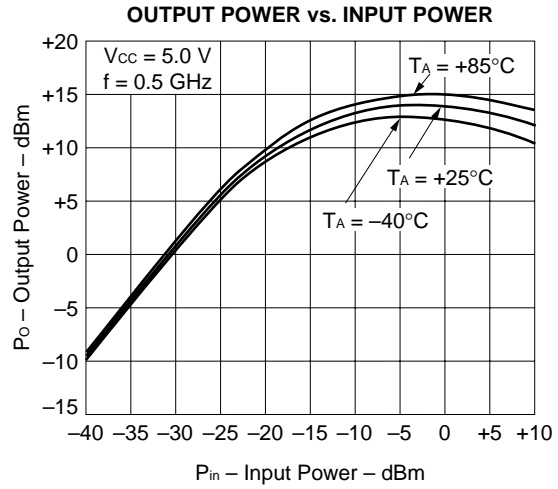
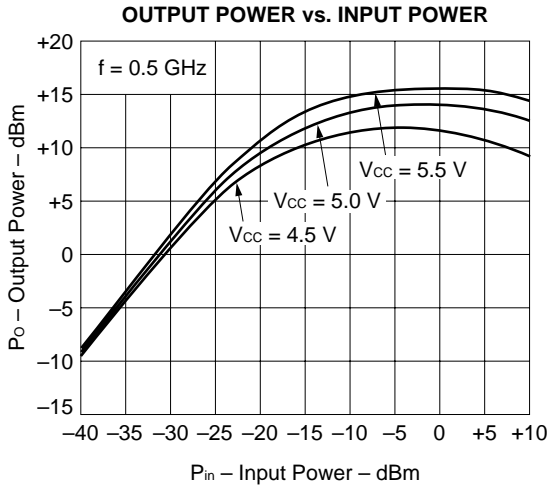


**ISOLATION vs. FREQUENCY**



**INPUT RETURN LOSS, OUTPUT RETURN LOSS vs. FREQUENCY**

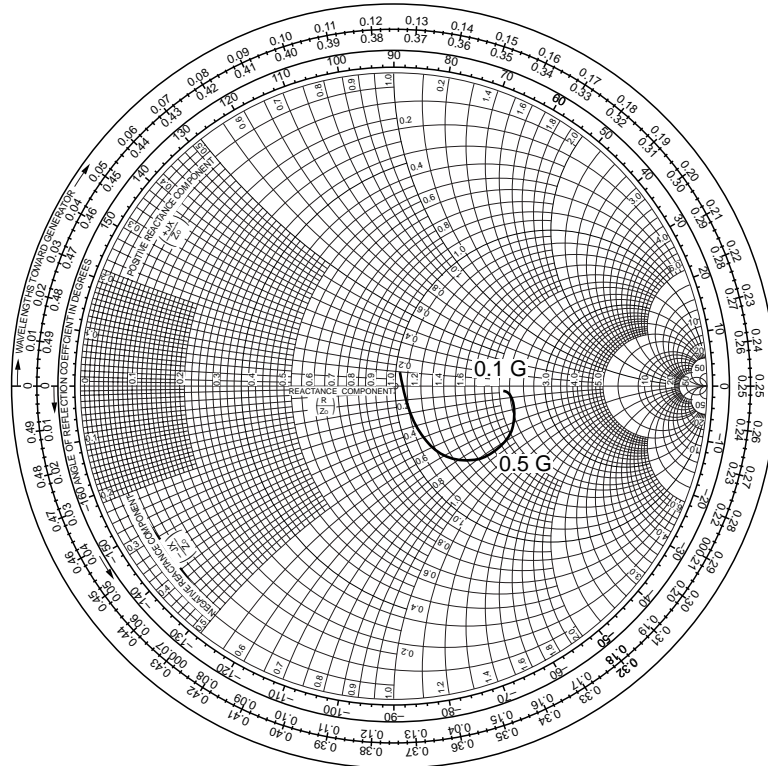




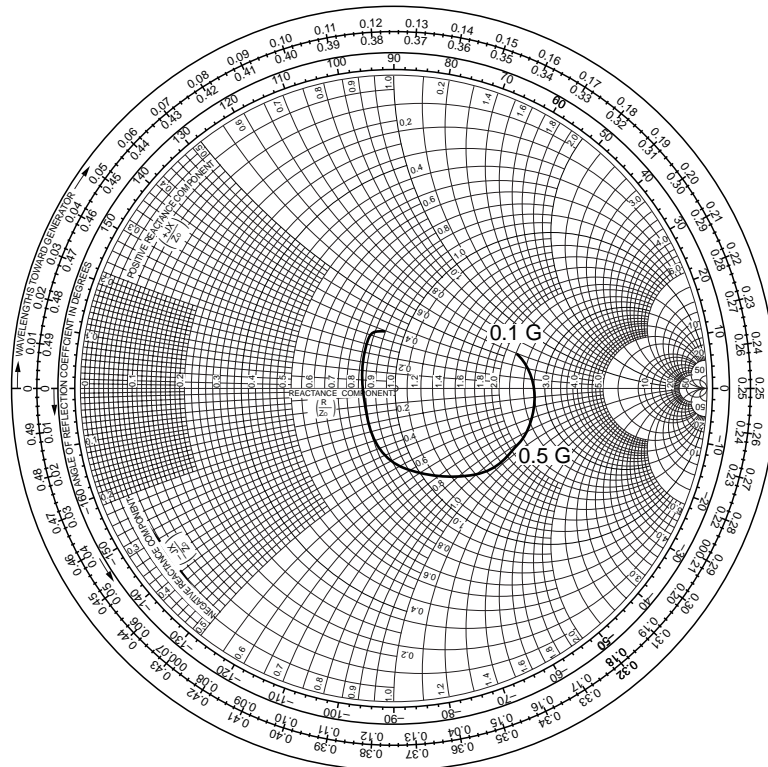


S-PARAMETER ( $V_{CC} = V_{out} = 5.0\text{ V}$ )

S<sub>11</sub>-FREQUENCY



S<sub>22</sub>-FREQUENCY



TYPICAL S-PARAMETER VALUES (T<sub>A</sub> = +25°C)

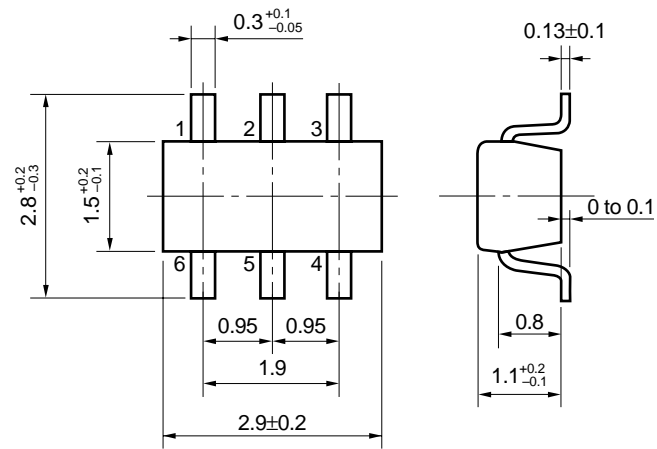
μ PC2710T

V<sub>CC</sub> = V<sub>out</sub> = 5.0 V, I<sub>CC</sub> = 21 mA

FREQUENCY MHz	S11		S21		S12		S22		K
	MAG	ANG	MAG	ANG	MAG	ANG	MAG	ANG	
100.0000	.322	-0.3	37.668	-5.9	.013	17.1	.200	-11.7	1.06
200.0000	.346	3.3	38.808	-17.0	.012	19.8	.208	-15.4	1.07
300.0000	.383	2.1	40.192	-28.0	.009	22.5	.231	-23.5	1.21
400.0000	.429	-1.7	41.567	-40.4	.009	25.1	.258	-34.2	1.10
500.0000	.465	-9.4	42.130	-54.1	.012	27.8	.273	-47.2	0.86
600.0000	.486	-17.8	42.282	-68.3	.013	30.5	.305	-60.9	0.79
700.0000	.487	-27.2	41.075	-83.2	.013	33.1	.319	-77.8	0.82
800.0000	.468	-36.5	39.129	-97.9	.013	35.8	.320	-96.2	0.89
900.0000	.423	-44.5	35.399	-111.7	.013	38.5	.297	-115.4	1.04
1000.0000	.392	-50.3	32.933	-123.4	.014	41.2	.260	-128.2	1.10
1100.0000	.349	-56.6	30.025	-135.5	.014	43.9	.240	-142.2	1.22
1200.0000	.301	-61.0	26.823	-146.8	.015	46.6	.216	-156.3	1.31
1300.0000	.257	-63.2	23.836	-156.8	.016	49.2	.192	-169.7	1.40
1400.0000	.217	-63.5	21.128	-165.9	.016	51.6	.173	176.0	1.56
1500.0000	.184	-59.9	18.841	-174.2	.017	54.5	.155	162.3	1.65

PACAGE DIMENSIONS

6 pin minimold (Unit: mm)



**NOTES ON CORRECT USE**

- (1) Observe precautions for handling because of electro-static sensitive devices.
- (2) Form a ground pattern as wide as possible to minimize ground impedance (to prevent undesired oscillation).  
All the ground pins must be connected together with wide ground pattern to decrease impedance difference.
- (3) The bypass capacitor should be attached to Vcc line.
- (4) The inductor must be attached between Vcc and output pins. The inductance value should be determined in accordance with desired frequency.
- (5) The DC cut capacitor must be attached to input pin.

**RECOMMENDED SOLDERING CONDITIONS**

This product should be soldered under the following recommended conditions. For soldering methods and conditions other than those recommended below, contact your NEC sales representative.

**μPC2710T**

Soldering Method	Soldering Conditions	Recommended Condition Symbol
Infrared Reflow	Package peak temperature: 235°C or below Time: 30 seconds or less (at 210°C) Count: 3, Exposure limit <sup>Note</sup> : None	IR35-00-3
VPS	Package peak temperature: 215°C or below Time: 40 seconds or less (at 200°C) Count: 3, Exposure limit <sup>Note</sup> : None	VP15-00-3
Wave Soldering	Soldering bath temperature: 260°C or below Time: 10 seconds or less Count: 1, Exposure limit <sup>Note</sup> : None	WS60-00-1
Partial Heating	Pin temperature: 300°C Time: 3 seconds or less (per side of device) Exposure limit <sup>Note</sup> : None	—

**Note** After opening the dry pack, keep it in a place below 25°C and 65% RH for the allowable storage period.

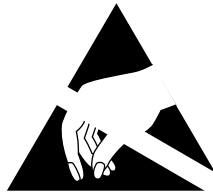
**Caution** Do not use different soldering methods together (except for partial heating).

For details of recommended soldering conditions for surface mounting, refer to information document SEMICONDUCTOR DEVICE MOUNTING TECHNOLOGY MANUAL (C10535E).

[MEMO]

[MEMO]

[MEMO]



## ATTENTION

OBSERVE PRECAUTIONS  
FOR HANDLING  
ELECTROSTATIC  
SENSITIVE  
DEVICES

**NESAT (NEC Silicon Advanced Technology) is a trademark of NEC Corporation.**

No part of this document may be copied or reproduced in any form or by any means without the prior written consent of NEC Corporation. NEC Corporation assumes no responsibility for any errors which may appear in this document.

NEC Corporation does not assume any liability for infringement of patents, copyrights or other intellectual property rights of third parties by or arising from use of a device described herein or any other liability arising from use of such device. No license, either express, implied or otherwise, is granted under any patents, copyrights or other intellectual property rights of NEC Corporation or others.

While NEC Corporation has been making continuous effort to enhance the reliability of its semiconductor devices, the possibility of defects cannot be eliminated entirely. To minimize risks of damage or injury to persons or property arising from a defect in an NEC semiconductor device, customers must incorporate sufficient safety measures in its design, such as redundancy, fire-containment, and anti-failure features.

NEC devices are classified into the following three quality grades:

"Standard", "Special", and "Specific". The Specific quality grade applies only to devices developed based on a customer designated "quality assurance program" for a specific application. The recommended applications of a device depend on its quality grade, as indicated below. Customers must check the quality grade of each device before using it in a particular application.

**Standard:** Computers, office equipment, communications equipment, test and measurement equipment, audio and visual equipment, home electronic appliances, machine tools, personal electronic equipment and industrial robots

**Special:** Transportation equipment (automobiles, trains, ships, etc.), traffic control systems, anti-disaster systems, anti-crime systems, safety equipment and medical equipment (not specifically designed for life support)

**Specific:** Aircrafts, aerospace equipment, submersible repeaters, nuclear reactor control systems, life support systems or medical equipment for life support, etc.

The quality grade of NEC devices is "Standard" unless otherwise specified in NEC's Data Sheets or Data Books. If customers intend to use NEC devices for applications other than those specified for Standard quality grade, they should contact an NEC sales representative in advance.

Anti-radioactive design is not implemented in this product.