

- AVAILABLE IN JAN, JANTX, JANTXV AND JANS PER MIL-PRF-19500/533
- 500 mW ZENER DIODES
- NON CAVITY CONSTRUCTION
- METALLURGICALLY BONDED

**1N6309US  
THRU  
1N6320US**

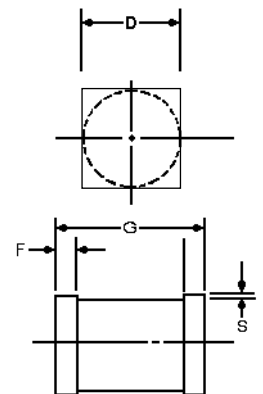
### MAXIMUM RATINGS

Operating Temperature: -65°C to +175°C  
 Storage Temperature: -65°C to +175°C  
 Power Dissipation: 500 mW@T<sub>EC</sub>=+125°C  
 Power Derating: 10 mW/°C above T<sub>EC</sub>=+125°C  
 Forward Voltage: 1.4V dc @ I<sub>F</sub>=1A dc (pulsed)

### ELECTRICAL CHARACTERISTICS @ 25°C, unless otherwise specified

TYPE	V <sub>Z2</sub> NOM. ±5% @ I <sub>Z2</sub>	V <sub>Z1</sub> MIN. @ I <sub>Z1</sub> 250μ A	I <sub>Z2</sub> TEST CURRENT	Z <sub>Z</sub> @ I <sub>Z2</sub>	Z <sub>ZK</sub> @ 250μ A	I <sub>ZM</sub>	V <sub>Z</sub> (reg) Δ V <sub>Z</sub> (1)	I <sub>ZSM</sub> SURGE	V <sub>R</sub>	I <sub>R1</sub> @ 25°C	I <sub>R2</sub> @ TA= 150°C	N <sub>D</sub> @250μA 1-3 kHz
	VOLTS	VOLTS	mA	OHMS	OHMS	mA	VOLTS	AMPS	VOLTS	μ A	μ A	μ V/√Hz
1N6309US	2.4	1.1	20	30	1200	177	1.5	2.5	1.0	100	200	1.0
1N6310US	2.7	1.2	20	30	1300	157	1.5	2.2	1.0	60	150	1.0
1N6311US	3.0	1.3	20	29	1400	141	1.5	2.0	1.0	30	100	1.0
1N6312US	3.3	1.5	20	24	1400	128	1.6	1.8	1.0	5.0	20	1.0
1N6313US	3.6	1.8	20	22	1400	117	1.6	1.65	1.0	3.0	12	1.0
1N6314US	3.9	2.0	20	20	1700	108	1.6	1.5	1.0	2.0	12	1.0
1N6315US	4.3	2.4	20	18	1400	99	0.9	1.4	1.0	2.0	12	1.0
1N6316US	4.7	2.8	20	16	1500	90	0.5	1.27	1.5	5.0	12	1.0
1N6317US	5.1	3.3	20	14	1300	83	0.4	1.17	2.0	5.0	12	1.0
1N6318US	5.6	4.3	20	8.0	1200	76	0.4	1.10	2.5	5.0	10	2.0
1N6319US	6.2	5.2	20	3.0	800	68	0.3	0.97	3.5	5.0	10	5.0
1N6320US	6.8	6.0	20	3.0	400	63	0.35	1.23	4.0	2.0	50	5.0

NOTE 1: Δ V<sub>Z</sub> = V<sub>Z</sub> @ 20 mAdc minus V<sub>Z</sub> @ 2mAdc



DIM	MILLIMETERS		INCHES	
	MIN	MAX	MIN	MAX
D	1.78	2.16	0.070	0.085
F	0.48	0.71	0.019	0.028
G	4.19	4.95	0.165	0.195
S	0.08MIN.		0.003MIN.	

FIGURE 1

### DESIGN DATA

**CASE:** D-5D, Hermetically sealed glass case, per MIL-PRF- 19500/533

**LEAD FINISH:** Tin / Lead

**THERMAL RESISTANCE:** (R<sub>ΘJEC</sub>): 50 °C/W maximum

**THERMAL IMPEDANCE:** (Z<sub>ΘJX</sub>): 15 °C/W maximum

**POLARITY:** Diode to be operated with the banded (cathode) end positive.

**MOUNTING SURFACE SELECTION:**  
 The Axial Coefficient of Expansion (COE) of this device is approximately + 4PPM / °C. The COE of the Mounting Surface System should be selected to provide a suitable match with this device.



**COMPENSATED DEVICES INCORPORATED**

22 COREY STREET, MELROSE, MASSACHUSETTS 02176  
 PHONE (781) 665-1071 FAX (781) 665-7379  
 WEBSITE: <http://www.cdi-diodes.com> E-mail: [mail@cdi-diodes.com](mailto:mail@cdi-diodes.com)



For the complete DATASHEET please visit [www.searchdatasheets.com](http://www.searchdatasheets.com) and [register](#) as a paying customer.

Price starting at: \$50 US for a weekly membership.

\$150 US for 3 months membership, and \$500 US for a yearly membership.

---

“Searchdatasheets provides users with one of the Internet’s most complete sources for obsolete datasheets,” said Ariel Zriel, President, Market Maker Systems.

As the life-cycle of components is shortened by the constant demand for faster and better technology, electronics parts are being rendered obsolete at an unprecedented rate. Searchdatasheets gathers and stores the fact sheets, which explain how to use those components.

“Once a component manufacturer decides to eliminate a component datasheet from its web site,” said Zriel, “we take over and list it along with the millions of other datasheets that our users can quickly access.”

Users can perform standard searches for datasheets, or use the cross-reference search option if they want to find a compatible part from another manufacturer.

Searchdatasheets also informs its users when parts are going to become obsolete, providing them with timely product change notification (PCN), product discontinuation notices (PDN) and end of life (EOL) notification.

Searchdatasheets is the only database of its kind that has components engineers onstaff.

That means users can count on assistance from qualified personnel when performing cross-reference searches. Searchdatasheets engineers also regularly research and add and new datasheets to the system.

“We have full-time Engineers on-staff to research and add datasheets if the information is not currently on our site,” said Zriel. “We are providing a place for users to have their questions answered quickly. Our aim is to build a community for components engineers who need help in product design.”

For information or to contact us:

Market Maker Systems Canada

Phone: 1-514-333-1245

Fax: 1-514-333-1489

Email: [sales@searchdatasheets.com](mailto:sales@searchdatasheets.com)

