

# Central<sup>TM</sup> Semiconductor Corp.

145 Adams Avenue, Hauppauge, NY 11788 USA  
Tel: (631) 435-1110 • Fax: (631) 435-1824

Manufacturers of World Class Discrete Semiconductors

## CRHV10F SERIES

10KV THRU 18KV  
HIGH VOLTAGE RECTIFIER  
FAST RECOVERY

AXIAL LEAD EPOXY CASE

### DESCRIPTION

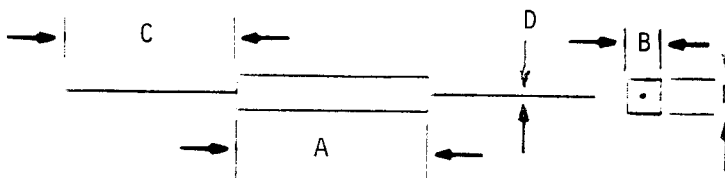
The CENTRAL SEMICONDUCTOR CRHV10F Series types are High Voltage Miniature Rectifiers designed for voltage multiplier applications where fast reverse recovery time is required.

### MAXIMUM RATINGS (T<sub>A</sub>=25°C)

SYMBOL	CRHV10F	CRHV10F	CRHV10F	CRHV10F	UNIT
	-10	-12	-15	-18	
Peak Repetitive Reverse Voltage	10	12	15	18	kV
Average Forward Current			5.0		mA
Peak Forward Surge Current			3.0		A
Operating and Storage Junction Temperature		-65 TO +150			°C

### ELECTRICAL CHARACTERISTICS (T<sub>A</sub>=25°C)

SYMBOL	TEST CONDITIONS	MIN	MAX	UNIT
I <sub>R</sub>	V <sub>R</sub> =Rated V <sub>RRM</sub>		1.0	µA
V <sub>F</sub>	I <sub>F</sub> =Rated I <sub>O</sub> (10kV, 12kv)		24	V
V <sub>F</sub>	I <sub>F</sub> =Rated I <sub>O</sub> (15kV)		30	V
V <sub>F</sub>	I <sub>F</sub> =Rated I <sub>O</sub> (18kv)		36	V
t <sub>rr</sub>	I <sub>F</sub> =Rated I <sub>O</sub> (18kv)		200	ns



DIM	INCH
A (-10, -12, -15)	.400 MAX
A (-18)	.620 MAX
B	.150 MAX
C	.400 MIN
D	.020