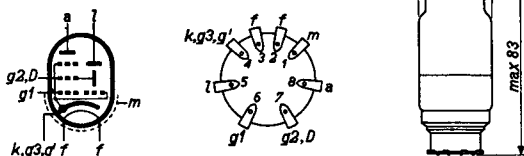


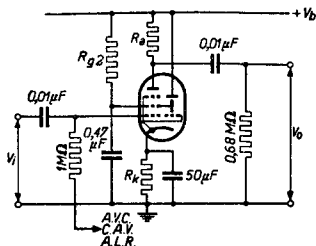
L.F. PENTODE - TUNING INDICATOR
 PENTHODE B.F.- INDICATRICE D'ACCORD
 N.F. PENTHODE- ABSTIMMANZEIGER

Heating: indirect by A.C. or D.C.;
 parallel or series supply
 Chauffage: indirect par C.A. ou C.C.; $V_f = 6,3 \text{ V}$
 alimentation en parallèle $I_f = 0,200 \text{ A}$
 ou en série
 Heizung: indirekt durch Wechsel-
 oder Gleichstrom;
 Parallel- oder Serienspeisung

Dimensions in mm
 Dimensions en mm
 Abmessungen in mm



Operating characteristics for use as L.F. amplifier
 and tuning indicator
 Caractéristiques d'utilisation comme amplificatrice
 B.F. et indicatrice d'accord
 Betriebsdaten als N.F. Verstärker und Abstimm-
 anzeiger



| | | | |
|-----------------------------|---|-------------|------------|
| $V_b = V_l$ | = | 250 | V |
| R_a | = | 130 | $k\Omega$ |
| R_{g2} | = | 350 | $k\Omega$ |
| R_k | = | 980 | Ω |
| V_{g1} | = | -2 | -20 |
| I_a | = | 0,8 | 0,5 |
| I_{g2} | = | 0,6 | 0,2 |
| I_l | = | 0,65 | 0,8 |
| V_a | = | 146 | 185 |
| V_{g2} | = | 40 | 180 |
| V_o/V_i | = | 60 | 13 |
| $d_{tot} (V_o = 5 V_{eff})$ | = | 2 | 1,7 |
| α | = | $>70^\circ$ | $<5^\circ$ |

Limiting values
 Caractéristiques limites
 Grenzdaten

| | | |
|--------------------------------|--------|--------------|
| V_{a_o} | = max. | 550 V |
| V_a | = max. | 300 V |
| W_a | = max. | 0,4 W |
| V_{g2_o} | = max. | 550 V |
| V_{g2} | = max. | 300 V |
| W_{g2} | = max. | 0,4 W |
| V_{l_o} | = max. | 550 V |
| V_l | = max. | 300 V |
| I_k | = max. | 5 mA |
| R_{g1} | = max. | 3 $M\Omega$ |
| R_{fk} | = max. | 20 $k\Omega$ |
| V_{fk} | = max. | 100 V |
| $V_{g1} (I_{g1} = +0,3 \mu A)$ | = max. | -1,3 V |

PHILIPS



*Electronic
Tube*

HANDBOOK

| page | EFM1 sheet | date |
|-------------|-----------------------|-------------|
| 1 | 1 | 1948.09.28 |
| 2 | 2 | 1948.09.28 |
| 3 | FP | 1999.07.04 |